

## Location

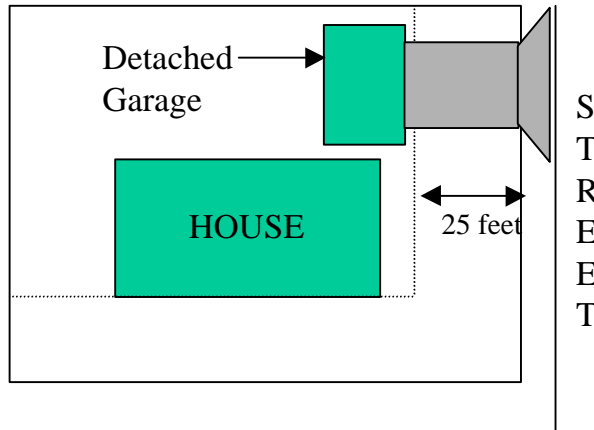
- A detached garage must not be located in any utility or drainage easements.
- A detached garage must be located a minimum of six feet (6') from the the rear and side property lines.

## Other Requirements

- A separate driveway permit needs to be obtained from the Engineering Division.
- If electricity is being extended to the garage a separate electrical permit application will need to be completed.

## Corner Lots

Detached Garages on corner lots must meet the principal building setback on the exposed corner side yard.



STREET

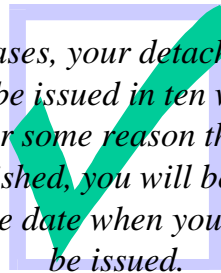


## Permit Submission Requirements

In addition to a completed application, all permit submissions are required to include the following information:

- The location of the proposed garage indicated on a plat of survey
- A framing plan for the proposed garage

*In most cases, your detached garage permit will be issued in ten working days or less. If for some reason this cannot be accomplished, you will be given an approximate date when your permit will be issued.*



## Questions ?

*Please call the Department of Engineering & Community Development at (847) 357-4220 Monday through Friday, between the hours of 8:00 a.m. and 5:00 p.m.*

## Detached Garages



*A How-to Guide for Obtaining a Permit for your Project*



Elk Grove Village Home Improvement Series





# Why apply for a permit?

When you apply for a permit ,you are assisting the Village in conducting a plan review and the subsequent inspections that will ensure that all structures in the community meet specific safety and quality guidelines.

The Village is on your side. We want to ensure that you will enjoy your detached garage for many years to come. The permit you receive for this project will allow us to do just that.

Elk Grove Village is dedicated to assisting its residents. The Department of Engineering & Community Development will show you this dedication as you apply for and receive your detached garage permit.

---

## The Permit Process

- 1 Obtain a permit application from the Department of Engineering & Community Development which is located on the lower level of the Charles J. Zettek Municipal Building at 901 Wellington Avenue.
- 2 Return the completed application with three (3) copies of your plat of survey to the Department of Engineering & Community Development. Please refer to submission requirements for additional necessary information.
- 3 After you receive your permit, and at least 48 hours before you begin digging, call JULIE (Joint Utility Locating Information for Excavators) at 1-(800) 892-0123 and the Elk Grove Village Department of Public Works at (847) 734-8800 for utility locations.



## Inspections

Inspections required at various stages of the project are:

### Pre-Pour

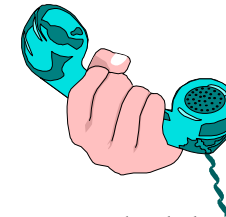
This inspection is conducted to ensure the proper foundation and location of your garage.

### Framing

This inspection is to ensure that the garage is constructed in accordance with the approved plans.

### Final

Upon completion of the garage, to ensure that construction and restoration of the landscaping has been completed.



## Requesting Inspections

To schedule an inspection, contact the Department of Engineering & Community Development at (847) 357-4220, Monday through Friday between the hours of 8:00 a.m. and 5:00 p.m. Requests for inspections must be made 24 hours in advance. Please have your permit number ready when you call.